

Pro Active LifeCycle Management eDemo Information

Table of Contents

Introduction	2
Delivering the Demo	3
Demo Infrastructure.....	4
Network Layout.....	4
Booking and connecting to the Demo	5
Contacts	5

Introduction

This document outlines the information to connect and deliver the PALM (Pro Active LifeCycle Management) demo hosted on the ALE eDemo platform.

All information is subject to change. In case of any doubt, please check with the eDemo team or NBE Solution Architects.

Please feel free to send any improvements of ideas to the eDemo/NBE SA teams (contact details at end of this document).

Delivering the Demo

Pro Active LifCycle Management is a GUI-based tool allowing BPs (and eventually End Users) to have an up to date view of the Software and Hardware support situation of all ALE equipment in a customer network.

The PALM service uses OmniVista2500 NMS to collect and send equipment information to ALE's Cloud Data Centre, where the information is hosted and formatted allowing administrators a quick overview of the network's support status.

Please refer to the PALM datasheet for more information:

http://enterprise.alcatel-lucent.com/assets/documents/ProActive_Lifecycle_Management_datasheet_EN.pdf

In addition, there is a short video on the PALM eDemo website showing the interface.

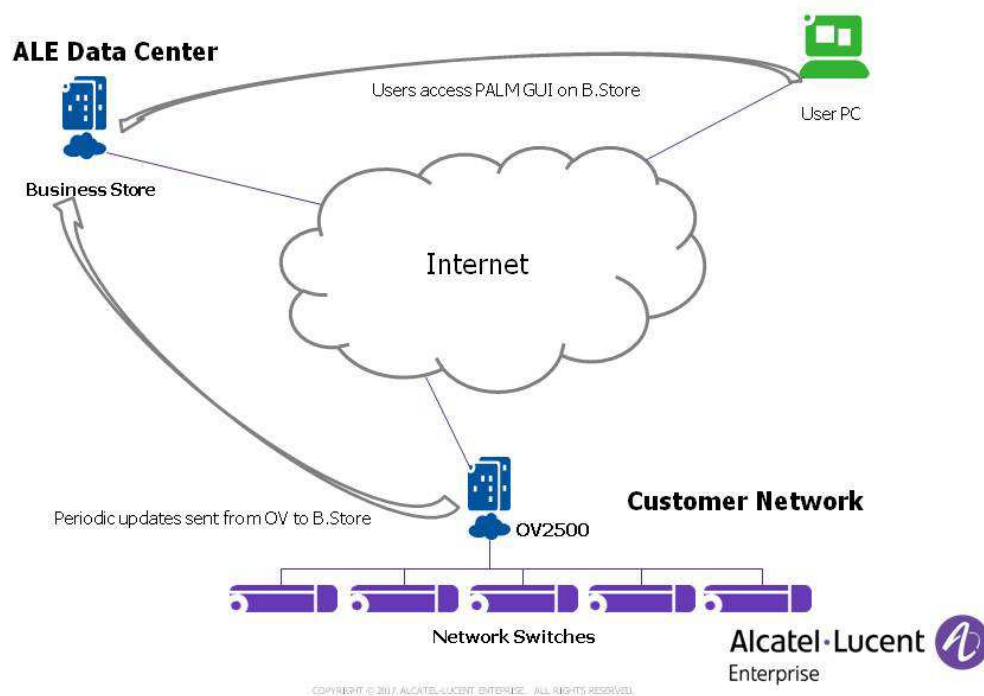
This eDemo also has a 'demo script' to guide a first time user on how to present the solution and contains information on the different sections.

Demo Infrastructure

Network Layout

The following diagram shows the basic layout of the demo:

PALM eDemo Network Topology



Booking and connecting to the Demo

The PALM eDemo is available at the following URL:

http://edemo.al-mydemo.com/?page_id=2235

To book, click on the link "[Register and book a demo](#)"

You will be sent a URL for the PALM login page, along with login credentials.

Contacts

eDemo Contacts:

EMEA (CET 9am-6pm): ✉ edemo-support@al-enterprise.com

NAR /CALA (PST 9am-6pm): ✉ edemo-support-americas@al-enterprise.com

APAC, China (AWST 9am-6pm): ✉ edemo-support-apac-china@al-enterprise.com

NBE Solution Architects

Mike Dann

mike.dann@al-enterprise.com

Ahmed Bekka

ahmed.bekka@al-enterprise.com

Patricio Martelo

patricio.martelo@al-enterprise.com