

Python Programmability and Event Manager SE Remote Demo Platform Information

Table of Contents

Introduction.....	2
How to obtain access to the Demo?	3
Demo Infrastructure.....	8
Network diagram.....	8
Usernames, Addresses and Passwords	8
Conclusions.....	9
Contacts.....	9



Introduction

This document contains the necessary information to manage and deliver the demonstration of Alcatel-Lucent Enterprise’s *Python Programmability and Event Manager* feature and to connect to the demo infrastructure.

All information is subject to change as and when the demos are expanded and additional demos put in place. Please check with the content owner (contact details at end of this document) if in doubt, and for the latest version.

It is imperative that under **no circumstances** should you modify any of the configurations applied on any element of the platform. Indeed, as this demo is open to any System Engineer that requests access, we must preserve the present configuration so that all users will be able to use the demonstration script as written.

If this is your first Python remote demo (eDemo), it is strongly recommended that you familiarize yourself with the entire demo process. This means connecting to the demo platform and completing the demo script in its entirety before executing a customer facing demonstration.

Please feel free to send any ideas of improvements to the central team (contact details at end of this document).



How to obtain access to the Demo?

Access is via the Microsoft *Remote Desktop Connection* application that will allow to have access to a rebound server equipped with all required tools (serial *MobaXterm* terminal).

The process for access is as follows:

1. When on the eDemo *Python Programmability and Event Manager* dedicated web page (http://edemo.al-mydemo.com/?page_id=1531):
 - click on the “→ [Register and book a demo](#)” link
 - fill in the required fields (marked with an *)
 - Select the demo date and time on the calendar
 - “Email” and “ALE email contact” information may be the same if the demo is requested by an ALE employee, or different if the demo is requested by a non ALE employee.
 - The “Zone” in which the demo will be run (EMEA, APAC, NAR, CALA) is needed to allocate the relevant support for the demonstration
 - Click on the “Submit” button



Python booking

When do you want to play the demo (use the calendar on the right)...

Demo date * Start Time *

Duration * Timezone

In which region the demo will be run?

Please, introduce yourself...

First Name * Last Name *

Email * Phone *

Who is your contact at Alcatel-Lucent Enterprise (your email if you are from ALE)

ALE email contact *

Enter your Sales force id (if you have one)

Sales Force id

Comments

Antispam

Do you like edemo (yes or yes) ? *

Field: marked with an * are required.

Please book your demo 5 working days (Mon-Fri) in advance

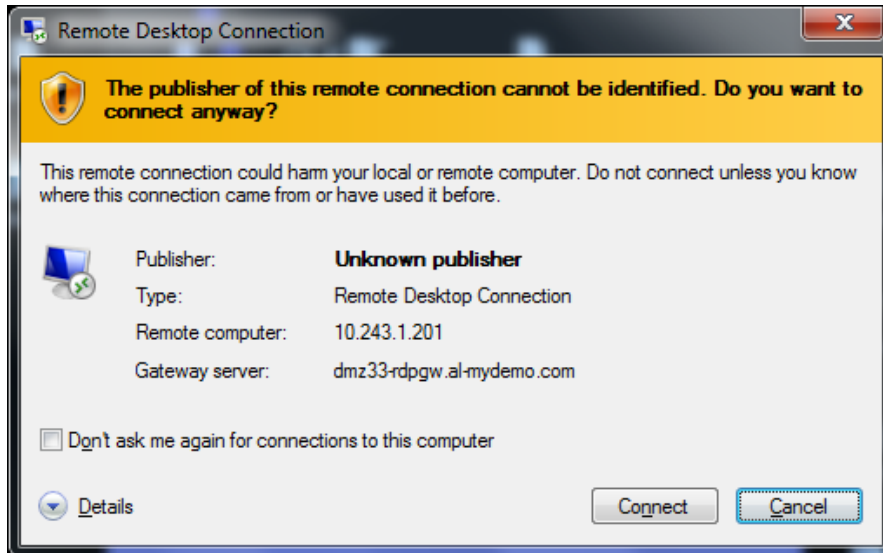
Dec 14 — 20, 2015

	Mon 12/14	Tue 12/15	Wed 12/16	Thu 12/17	Fri 12/18	Sat 12/19	Sun 12/20
all-day							
12:00pm							
1:00pm							
2:00pm							
3:00pm							
4:00pm							
5:00pm							
6:00pm							

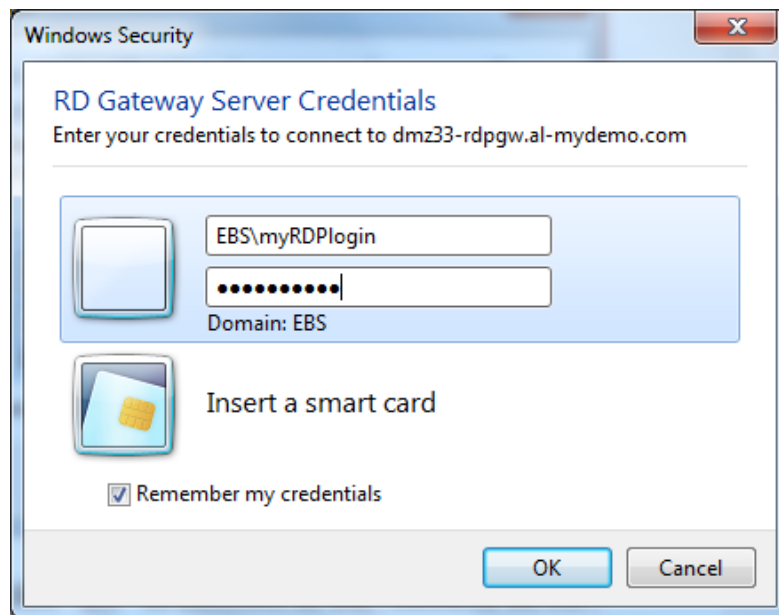
Legend:

- When the demonstration request is approved, you receive an email confirming the demonstration availability for the desired timeslot. The mail also includes a Microsoft *Remote Desktop Connection* “Python.RDP” file and an associated login/password (available for the requested timeslot only) that will allow authentication on the RDP gateway:
- Before executing the “Python.RDP” connection file, make sure you proxy is disabled. Go to Internet Explorer->Tools->Internet Options->Connections->Lan Settings. You need to do this on Internet Explorer even if you normally use a different browser.
- Execute the “Python.RDP” file and click on “Connect”:





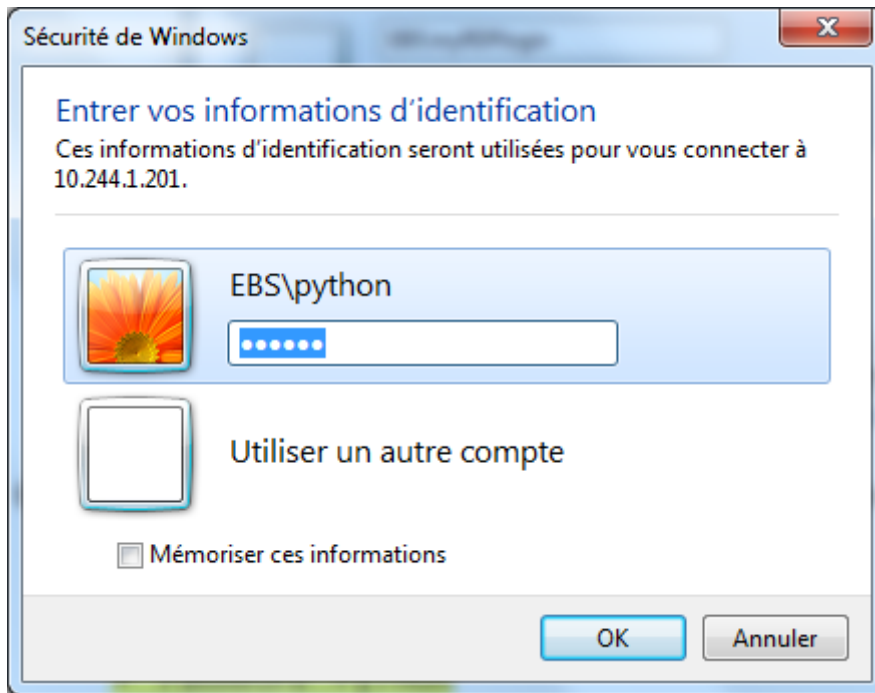
5. When prompted, enter your RDP login (prepend the “EBS” domain name) and password (included in received email) and click “OK”:



6. Authenticate and click “OK” to connect to the rebound server:

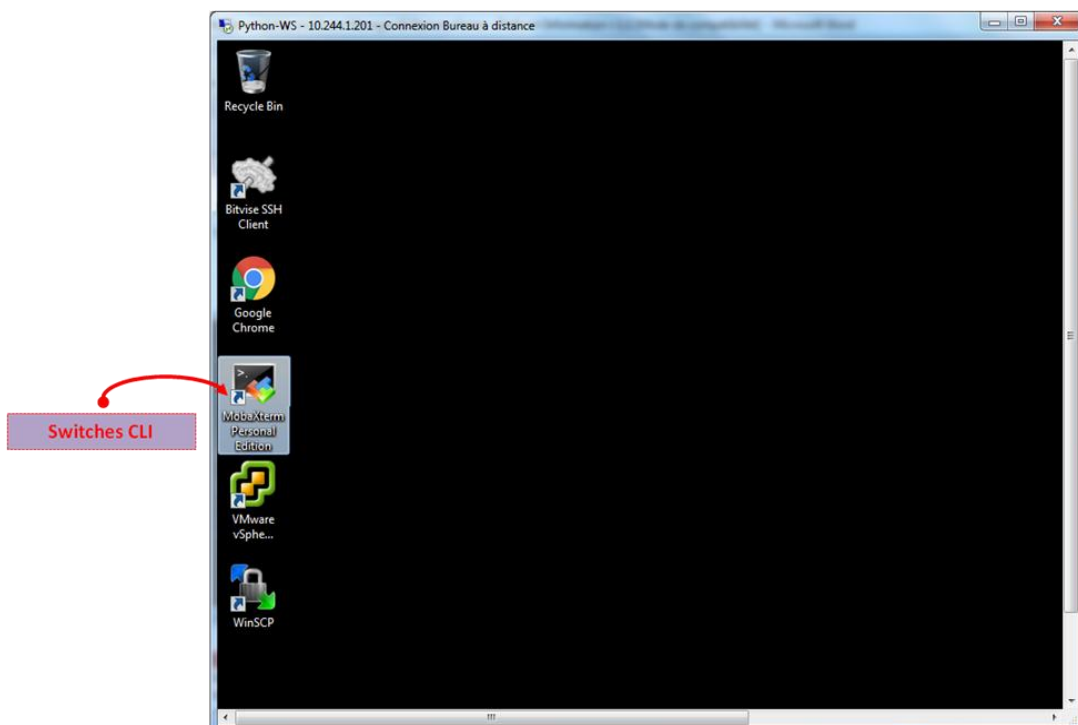
- ✓ Domain (pre-provisioned): EBS
- ✓ Login (pre-provisioned): python
- ✓ Password : Py7h0n





You should now be connected to the jump host and see its Microsoft desktop with shortcuts to all elements needed to run and control the demonstration:

- ✓ Moba XTerm



WARNING:

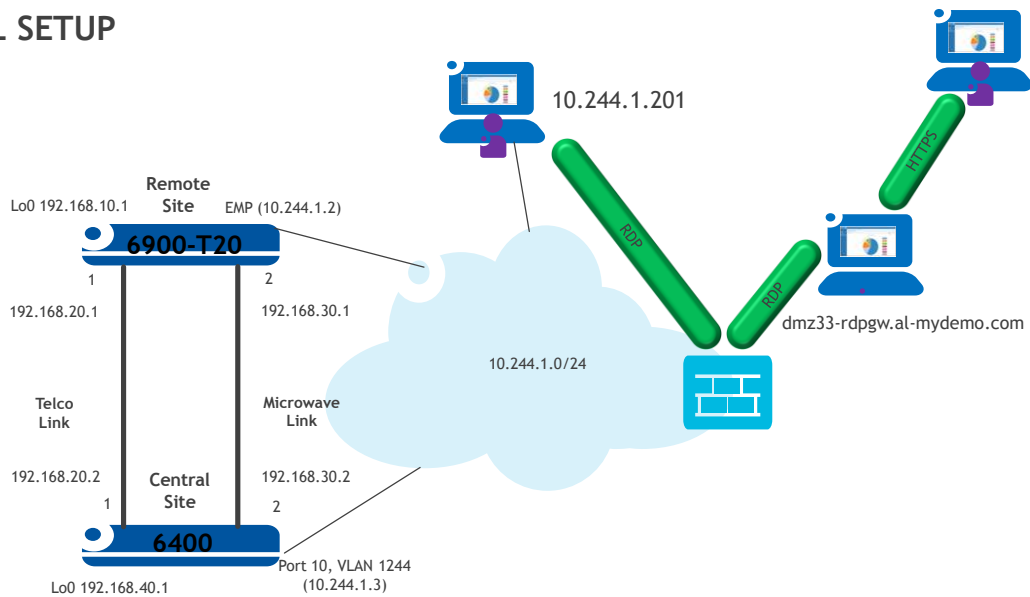
Ensure that the correct keyboard layout is selected by clicking on the language shortcut at the bottom right of the screen!
Today, the options are French and US EN.

Demo Infrastructure

Network diagram

The following diagram shows the layout of the demo:

ACTUAL SETUP



..... Alcatel-Lucent Enterprise

COPYRIGHT © 2014 ALCATEL-LUCENT. ALL RIGHTS RESERVED.
ALCATEL-LUCENT – INTERNAL PROPRIETARY – USE PURSUANT TO COMPANY INSTRUCTION

In this diagram:

- 6900-T: Represents a WAN access device for a Remote site with dual links: a “Telco” link (e.g. MPLS) and a “Microwave” link to the Central Site.
- 6400: Represents the Central Site. The Loopback0 interface on the 6400 will represent an Internet IP address.

You will have access to both switches Console ports through Moba XTerm on the jump host, however, you only need to access the 6900’s console to perform the demo.

Username, Addresses and Passwords



Equipment	Address	Username	Password	Notes
Jump Host	10.244.1.201	EBS\python	Py7h0n	
6900-T20, 6400	Moba Xterm	demouser	demouser	Read Only except for Interfaces on 6900

Conclusions

You are now ready to take the second step, which is to read the Python Programmability and Event Manager SE Remote Demo Script document.

Good luck and have fun!

Contacts

eDemo support team:

edemo-support@al-enterprise.com

